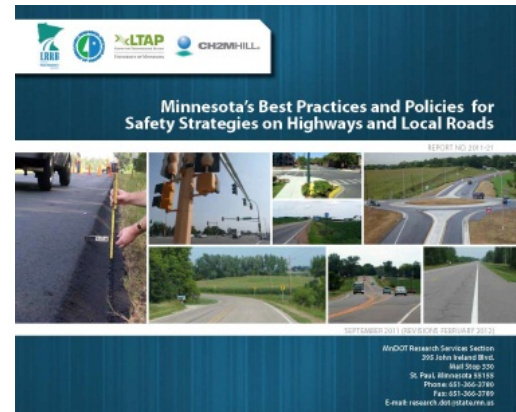


Minnesota's Best Practices and Policies for Safety Strategies on Highways and Local Roads

A new handbook aims to reduce the number of severe crashes on the state's highway system by helping agencies design, operate, and maintain their systems of roads and highways. A spinoff from the ongoing County Road Safety Plan efforts, this resource contains traffic safety strategies, sample policies and best practices information to support agencies as they implement their own policies.

The manual highlights several safety strategies, including:

- General
 - Access Management
 - Traffic Signs
- Intersections
 - Intersection Treatments
 - Rural Lighting
 - Traffic Signal Confirmation Lights
 - Pedestrian Treatments
 - Turn Lanes
 - Rural Through/STOP Intersections
- Roadside
 - Pavement Markings
 - Edge Line Rumbles
 - Horizontal Curve Delineation
 - Safety Edge
 - Clear Zones
 - Mailboxes
 - Guardrail and End Treatments



Each strategy also contains best practices information, including:

- Description and definition
- Safety characteristics
- Classification of proven, tried, ineffective or experimental
- Typical characteristics of candidate locations
- Roadway operations
- Typical costs
- Design features

The best practices are all based on studies and research done and are consistent with guidance prepared by FHWA, AASHTO and NCHRP. The sample policies that are given with each safety strategy are meant to help reduce the potential exposure to claims of negligence associated with motor vehicle crashes on an agency's roadway system. <http://www.lrrb.org/pdf/201121.pdf>

published May 29, 2013 on LRRB.com