

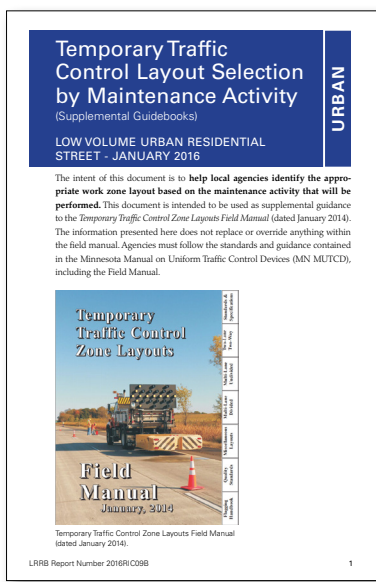


# Having Trouble Determining How to Select the Appropriate Workzone?

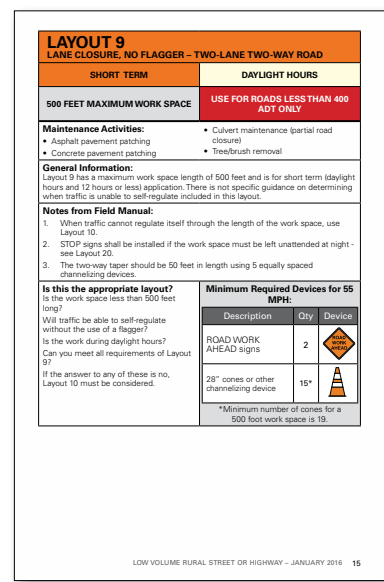
## Guidance for Temporary Traffic Control on Low Volume Roads

The LRRB recently funded the development of two supplemental guidebooks (rural and urban) to the **MN Temporary Traffic Control Work Zone Layouts Field Manual** (dated January 2014). The intent of these guidebooks is to help local agencies identify the appropriate work zone layout based on the maintenance activity that will be performed. These documents focus on **low volume roads** only. The information presented here does not replace or override anything within the field manual.

The full report includes a copy of a letter that was written and submitted to the MN Committee on Uniform Traffic Control Devices in April 2016, requesting changes for low volume roadways and a summary of work zone resources and training opportunities.



Urban Temporary Traffic Control



Example of a layout guidance table

***“These guidebooks will be a great resource for our maintenance staff when selecting a work zone layout”***  
– Lon Aune, County Engineer, Marshall County

### Get a copy here:

- Full Report: <http://www.dot.state.mn.us/research/TS/2016/2016RIC09.pdf>
- Rural Maintenance – Supplemental Guidebook: <http://www.dot.state.mn.us/research/TS/2016/2016RIC09A.pdf>
- Urban Maintenance – Supplemental Guidebook: <http://www.dot.state.mn.us/research/TS/2016/2016RIC09B.pdf>
- Letter to MCUTCD Committee: <http://www.dot.state.mn.us/research/TS/2016/2016RIC09C.pdf>

### Printing Instructions for Supplemental Guides:

The supplemental guides are formatted to be printed as a booklet. The printed document is the same size as the field manual so that it can be stored within the book. In order for it to print properly, use these printing settings:

- Landscape
- 2-sided, flip on the short side (if you flip on long side ½ of the pages will be upside down)
- Color (preferred, but optional)

Once printed, fold the entire stack of paper in half to create a booklet. Staple the seam.

***“These guidebooks give confidence to maintenance personnel selecting a traffic control layout because they are grouped by type of activity instead of location on the roadway. More confidence equals better compliance.”***  
– Vic Lund, Traffic Engineer, St. Louis County